

# Neuromodulation THE SCIENCE

Bringing invasive and non-invasive stimulation together  
to advance neuromodulation

February 28 - March 2, 2022

Post-Conference Workshop: March 3, 2022

Lihue, HI

## Exhibitor & Sponsor Prospectus

PRESENTED BY:

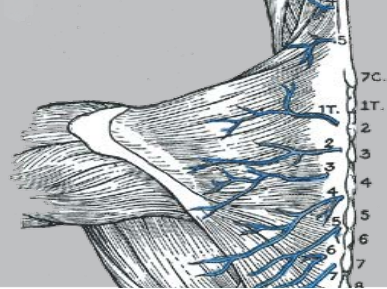


AND



# Neuromodulation THE SCIENCE

Feb. 28 - Mar. 2  
Lihue, HI



## About

**Neuromodulation: The Science** advances research, dissemination of knowledge, and the implementation of new findings within neuromodulation. Conference founder, Elliot Krames, MD established the journal *Neuromodulation: Technology at the Neural Interface* in 1998 as the preeminent journal to advance basic science research in the field of neuromodulation. **Neuromodulation: The Science** is the next step.

### **New scientific discoveries are transforming neuromodulation technologies.**

Join hundreds of clinician scientists, engineers, and neuroscientists Feb 28 - Mar 2, in Lihue, Hawai'i, for a dynamic conference on the science of neuromodulation. **Neuromodulation: The Science** combines the two largest conferences established to advance research, dissemination of knowledge, and implementation of new findings within neuromodulation.

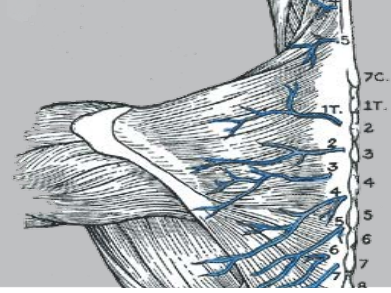
Across implanted and non-invasive neuromodulation technologies, important discoveries on new mechanisms of action and methods of stimulation are emerging. This new science of neuromodulation is poised to transform clinical care, open up new indications, and support new technology platforms.

**Neuromodulation: the Science** is produced by Neuromodec and Neurovations Education.



# Neuromodulation THE SCIENCE

Feb. 28 - Mar. 2  
Lihue, HI



## Conference Directors

(left to right)

**Eric Grigsby, MD, MBA**

Chief Medical Officer, the Alfred E. Mann Foundation; Founder and CEO, Neurovations: a Patient Care and Innovation Company; Founder & Medical Director, Napa Pain Institute, Spine & Pain Center of Kaua'i, Redwood Pain Institute

**Roy H. Hamilton, MD**

Associate Professor of Neurology, Associate Professor of Physical Medicine & Rehabilitation, Director, Laboratory for Cognition and Neural Stimulation, Assistant Dean for Diversity and Inclusion, Perelman School of Medicine, University of Pennsylvania

**Marom Bikson, PhD**

Shames Professor of Biomedical Engineering, Neural Engineering Group, Department of Biomedical Engineering, The City College of New York (CUNY)

**Elliot Krames, MD**

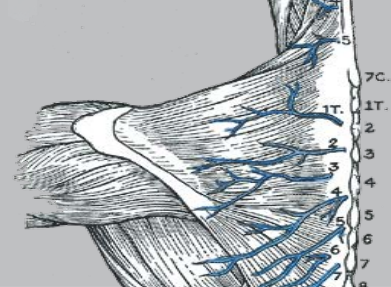
Founding Editor of *Neuromodulation: Technology at the Neural Interface*; former President of the International Neuromodulation Society (INS)





# Neuromodulation THE SCIENCE

Feb. 28 - Mar. 2  
Lihue, HI



## Scientific Program Committee

**Marom Bikson, PhD**

**Eric Grigsby, MD, MBA**

**Roy H. Hamilton, MD**

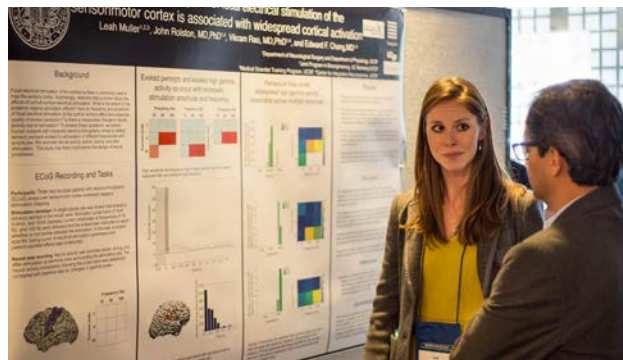
**Elliott Krames, MD**

**Ellis Meng, PhD**

Shelly and Ofer Nemirovsky Chair in Convergent  
Bioscience and Professor of Biomedical Engineering  
and Electrical and Computer Engineering, USC  
Viterbi School of Engineering

**Parag Patil, MD, PhD**

Associate Professor of Biomedical Engineering,  
College of Engineering, University of Michigan  
School of Medicine



## Program Chairs

**Jeffrey Ardell, PhD**

Director of the UCLA Neurocardiology Center for  
Excellence

**Joseph J. Pancrazio, PhD**

Professor; Vice President for Research at The  
University of Texas at Dallas

**Ela B. Plow, PhD, PT**

Assistant Professor, Lerner College of Medicine,  
Cleveland FES Center

**Seth Hays, PhD**

Director of Preclinical Research at the Texas  
Biomedical Device Center

**Parag Patil, MD, PhD**

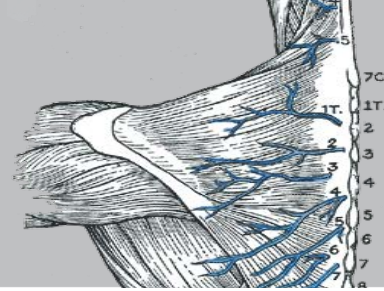
Associate Professor of Biomedical Engineering,  
College of Engineering, University of Michigan  
School of Medicine

**Ricardo Vallejo, MD, PhD**

Co-Founder, Director of Research at the  
Millennium Pain Center

# Neuromodulation THE SCIENCE

Feb. 28 - Mar. 2  
Lihue, HI



## Scientific ePoster Hall

Researchers continue innovating. Medical providers continue to seek the latest breakthroughs and clinical strategies. Our industry-leading ePoster hall extends the reach of your work to an audience ten times larger than traditional posters.

Share your research, clinical outcomes, quality improvement initiative, or patient care strategy. Submit your Abstract at: <https://education.neurovations.com/neurovations/abstracts/15/view>

## Abstract Deadlines

### Abstract Submission

Now - December 21, 2021

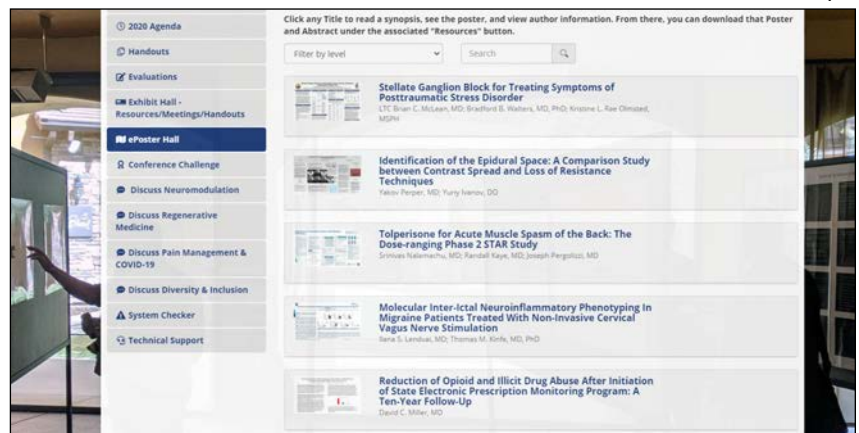
Abstracts must be submitted through the online portal by 11:59 pm, PDT, Tuesday, December 21.

### Results

January 24, 2022

The outcome of each abstract review will be emailed to the primary author listed within the abstract by Monday, January 24.

Pictured: ePoster Hall example



### ePosters Due

January 25 - February 14, 2022

High resolution posters due by February 14.

### ePosters Posted

February 18, 2022

Attendees will have access to ePosters by February 18.

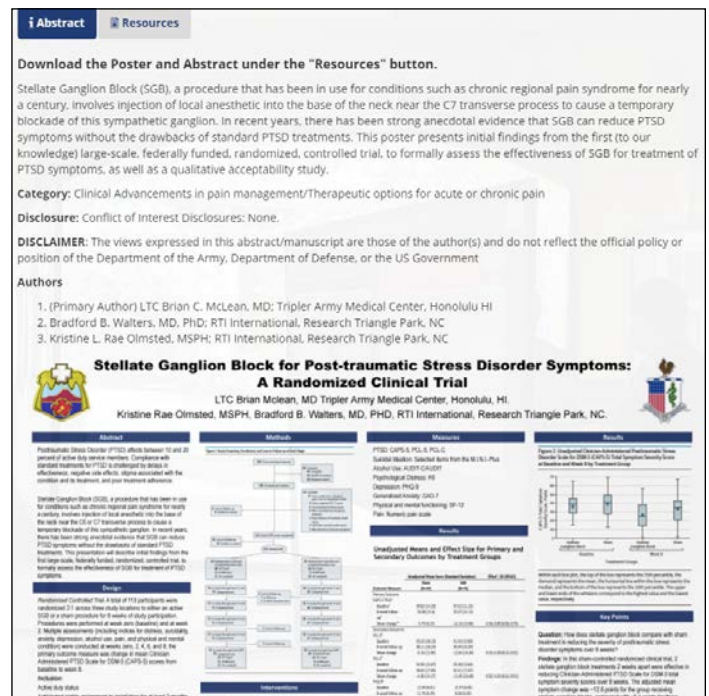
ePosters are viewable and searchable in the online Conference listing. Each work will be presented with a dedicated page that includes the ePoster, title, summary, author information, and a downloadable copy of the accepted abstract.

Pictured: ePoster example

### Abstracts & ePosters Published

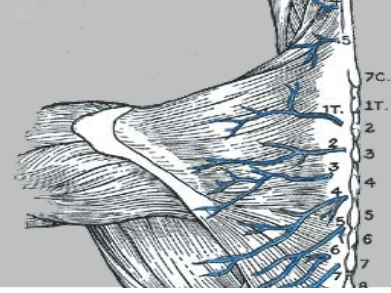
April 4, 2022

An eBook of all accepted abstracts and posters will be published online for the 3,600+ users of the [Neurovations Education Hub](#).



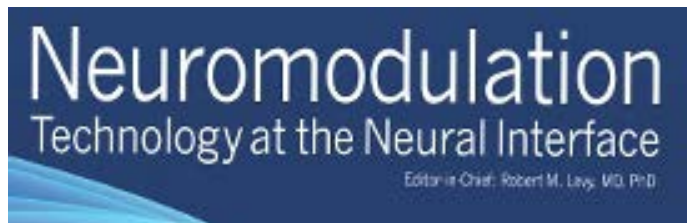
# Neuromodulation THE SCIENCE

Feb. 28 - Mar. 2  
Lihue, HI



## Publication

Through partnership with the International Neuromodulation Society (INS), conference abstracts will be eligible for publication in *Neuromodulation: Technology at the Neural Interface*.



In accordance with the INS's endorsement policy for external events and publications, all abstracts will adhere to the following:

- 1) Abstracts will be scientific and evidence based, and presenters will remain scientific and objective in their conclusions.
- 2) As is possible, generic terms for products, techniques and procedures should be employed. Abstracts must not include company or product promotional content.
- 3) The *Neuromodulation: The Science* scientific committee will review abstracts, mitigate any commercial biases, and resolve any conflicts of interest.
- 4) The event organizers will provide equitable funding opportunities to the companies for the conference, to remain fair and balanced.
- 5) The *Neuromodulation* editorial staff will have the opportunity to review the abstracts for commercial bias prior to publication.



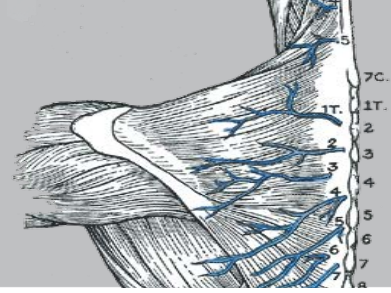
Learn more about Exhibit and Sponsorship opportunities at the **2022 Kapa'i Pain Conference**, March 4-5, 2022.

Discounts are available for dual participation!



# Neuromodulation THE SCIENCE

Feb. 28 - Mar. 2  
Lihue, HI



## Broadcast

Over 3,600 members

Neuroventions Education has over 3,600 active users in our online learning [Education Hub](#). Clinicians increasingly turn to Neuroventions Education for the best content in pain and neuroscience, from the brightest minds and industry leaders.

Web, email, and print campaigns reach tens of thousands of clinicians in pain management, neuroscience, regenerative medicine and family practice.



## Lead Generation

See who visited your Digital Booth and follow up with them at a later date.

Note: Attendees must authorize information sharing when entering your booth

Last Name	First Name	Email Address	Number of visits	Last Visited Timestamp
Bacon	William	wbacon@digitalinc.com	3	2020-04-24 07:19:33
Quicco	Jenna	jquicco@digitalinc.com	3	2020-04-16 14:15:53
DeLong	Cody	cdejong@digitalinc.com	1	2020-04-10 14:11:26
DeAngelo	Danielle	ddeangelo@digitalinc.com	2	2020-04-21 13:47:38
Sweney	Patrick	psweney@digitalinc.com	16	2020-04-17 14:18:20
Parker	James	jparker@digitalinc.com	14	2020-04-27 10:56:34
Hagan	Nicholas	nhagan@digitalinc.com	51	2020-04-25 17:29:34
Newman	James	jnewman@digitalinc.com	28	2020-04-23 12:39:16
Zambotti	Brian	bzambotti@digitalinc.com	64	2020-04-27 11:44:18
Pelley	Patrick	ppelley@digitalinc.com	41	2020-04-24 18:51:02
Fortney	Ray	rfortney@digitalinc.com	5	2020-04-23 16:27:58
Lubiani	Arisha	alubiani@digitalinc.com	1	2020-04-10 14:11:26
Zambotti	Brian	bzambotti@digitalinc.com	4	2020-04-15 12:01:27
Green	Tom	tom.green@big.com	1	2020-04-10 14:11:26
Kyle	Amanda	akyle@big.com	1	2020-04-10 14:11:26
Johnson	Jessica	johnson@shea-ortini.org	1	2020-04-10 14:11:26

## Welcome to the Education Hub

Navigation

Filter by products with Credit

<p>Event: Napa Pain Conference</p> <p>Event: Kauli Pain Conference</p>	<p>Event: Webinars</p> <p>Content: COVID-19</p> <p>Content: Pain Management</p> <p>Content: Clinical Care</p> <p>Content: Patient Management</p> <p>Content: Opticoids</p> <p>Content: Neuromodulation</p>	<p>International Headache Management</p> <p>Physician Wellness Webinar</p> <p>Napa Pain Conference 2020 All videos</p>
<p>How to Get Involved in Clinical Research</p> <p>Standard: FREE</p> <p>Add to Cart</p>	<p>Interventional Headache Management</p> <p>More Info</p>	<p>Clinician Wellness</p> <p>27th Napa Pain Conference - Archives</p> <p>Standard: \$19.95</p> <p>Add to Cart</p> <p>More Info</p>

## Immersive Online Learning Education live and on-demand

- Web-based access, viewable from any device
- Interactive audience chat
- Live, interactive Exhibit Hall, viewable up to 60 days after the conference
- Industry-leading ePoster Hall
- Games and digital badges to foster engagement
- Attendee networking directory
- Chat forums with email subscriptions
- Enhanced learning with note-taking in sessions, timestamped to the corresponding part of a presentation
- Real-time tech support

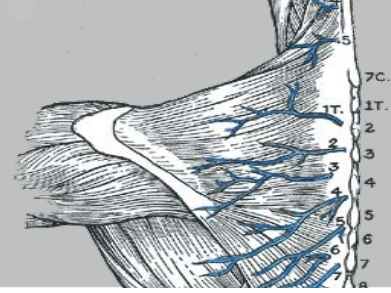
## Peer-to-Peer Networking

Online attendees can connect with each other through the participant directory, discussion forums, and direct messaging.

First Name	Last Name	Company	City	State
Avinash	Ramchandani	RPI	Santa Rosa	CA
Elizabeth	Rickerson	Harvard Medical School	Boston	MA
William	Rosenberg		Lexington	KY
Lisa	Stearns	Center for Pain and Supp	Phoenix	AZ

# Neuromodulation THE SCIENCE

Feb. 28 - Mar. 2  
Lihue, HI



## COVID-19 Requirements

REQUIREMENTS ARE EVOLVING AND SUBJECT TO CHANGE

Neuroventions Education looks forward to welcoming you to Kaua'i for **Neuromodulation: the Science** Conference, delivered in-person and online. The health and safety of our community is our highest priority. Thank you in advance for abiding by these rules and restrictions.

Neuroventions Education is requesting proof of vaccination status to attend in-person. This information will be collected during the registration process, and validated onsite during badge pickup.

**Requirements are subject to update and revision as federal, state, and local jurisdictions provide new and revised guidance.**

### **Traveling to Kaua'i (Lihue Airport - LIH)**

As per the County of Kaua'i:

- Effective July 8, the State of Hawai'i will eliminate its pre-travel testing/quarantine requirement for domestic travelers to Hawai'i who have been fully vaccinated in the United States. Travelers to Hawai'i must upload their CDC issued vaccination record card to the state's Safe Travels Program ([here](#)) website and have that card with them upon arrival in the State of Hawai'i.
- Travelers arriving on Kaua'i without valid proof of a negative COVID-19 test result or a vaccine record will be subject to the State of Hawai'i's strict 10-day mandatory self-quarantine requirement. Guidelines are located at: <http://kauai.gov/covid-19>

### **Attendee Requirements**

All attendees must:

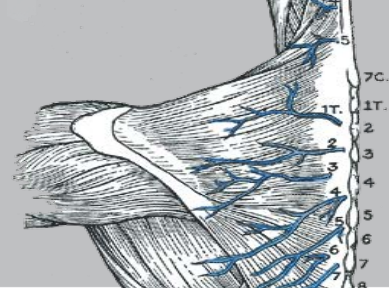
- Follow all COVID-19 protocols
- Monitor for signs and symptoms of COVID-19 before arriving at the conference
- Preregister. On-site registrations and substitutions cannot be permitted
- Wear a mask in all indoor meeting space.
- Have their temperature checked each morning.
- Classroom attendance is limited to individuals with full proof of vaccination.





# Neuromodulation THE SCIENCE

Feb. 28 - Mar. 2  
Lihue, HI



## Venue

### Royal Sonesta Kaua'i Resort Lihue

3610 Rice St  
Lihue, HI 96766

Neuromodulation: the Science will be held at the Royal Sonesta Kaua'i Resort on Kalapaki Beach, just two miles from Lihue Airport. The hotel offers rooms with spectacular views, free Wi-Fi, floor-to-ceiling windows, balconies, and a complimentary airport shuttle.

The property features six restaurants, most with ocean views, and is located a short walk from additional dining and entertainment. Outdoors, there's a pool with a bar and picnic area. Surf lessons, boat and car rentals can be made on site, and the spa, fitness center and kids' activity club ensure that there's something for everyone in your group.



Discounted Rooms for Exhibitors & Attendees

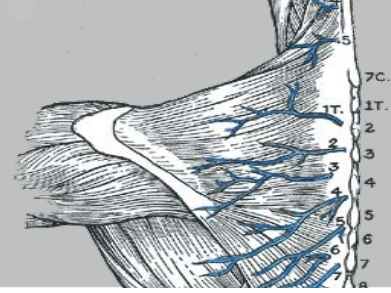
**\$299** AND UP, + TAXES & FEES

[Click here to book your room](#)



# Neuromodulation THE SCIENCE

Feb. 28 - Mar. 2  
Lihue, HI



## Advertising & Exhibit Packages

The best deals with exclusive items, VIP access and priority booth locations.

We're committed to making the program successful for sponsors, exhibitors and attendees.

Don't see something you'd like? Let us know, and we'll see what we can achieve.

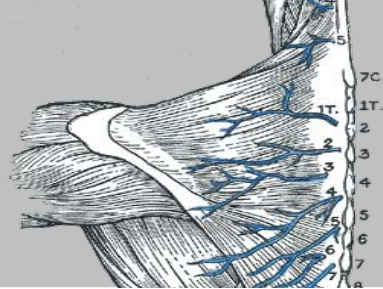
Contact the conference planning office at [Education@Neurovations.com](mailto:Education@Neurovations.com) or 707.260.0849 to discuss exhibit and sponsorship opportunities.



	PLATINUM \$37,495	GOLD \$24,995	SILVER \$12,495
Sponsor a speaker to the agenda <b>EXCLUSIVE PACKAGE BENEFIT</b> (Must provide a basic-science, R&D talk)	2 speakers	1 speaker	
Premium Exhibit Space <b>EXCLUSIVE PACKAGE BENEFIT</b>	10' x 20'	10' x 10'	Table top
Priority Exhibit Location (In-Person & Online) <b>EXCLUSIVE PACKAGE BENEFIT</b>	•	•	•
Private Meeting Space (Limited Availability) <b>EXCLUSIVE PACKAGE BENEFIT</b>	•	•	•
Option to attend the Faculty Dinner (Tuesday, March 1) <b>EXCLUSIVE PACKAGE BENEFIT</b>	3 seats	2 seats	1 seat
Sponsor Video (Played online during conference breaks)	4	2	1
Online Exhibit	Digital Booth + Banner	Digital Booth	Digital Booth
Integrated Online Video Chat <b>EXCLUSIVE PACKAGE BENEFIT</b>	•	•	
In-person Conference Registrations	12	8	4
Recognition in program materials	•	•	•
Recognition on conference website	•	•	•
Ribbons for your company representatives	•	•	•
Registration list of in-person and online conference attendees ( <i>subject to regulatory requirements for disclosability</i> )	•	•	•

# Neuromodulation THE SCIENCE

Feb. 28 - Mar. 2  
Lihue, HI

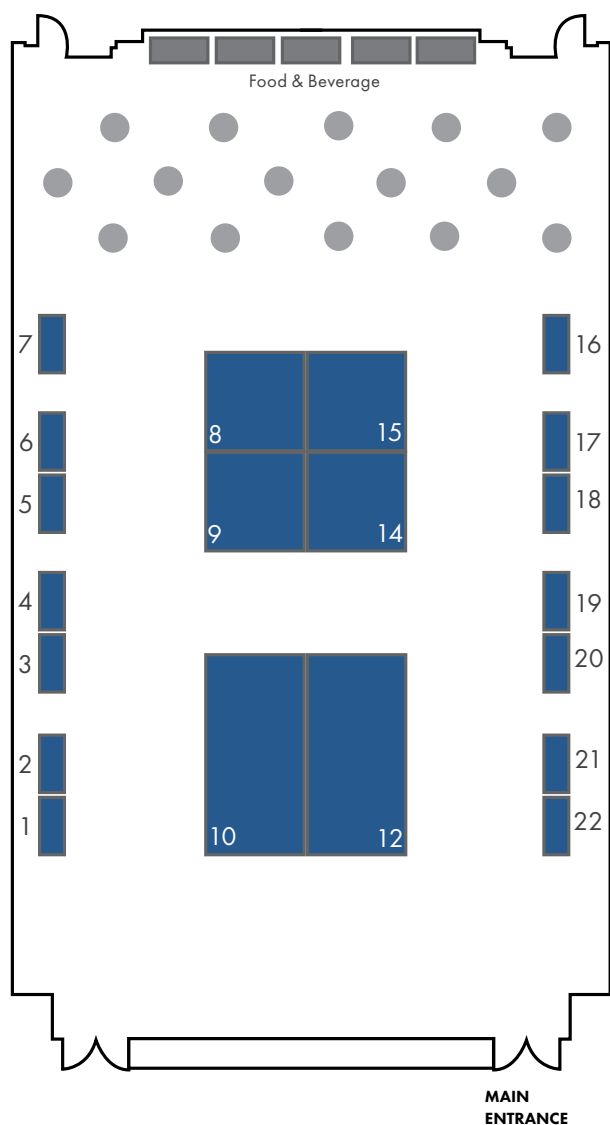


## Exhibits

Exhibits are available, but **space is limited**. Don't delay; secure the right booth for your company by acting fast.

Have a Question? Email our team at [Education@Neurovations.com](mailto:Education@Neurovations.com).

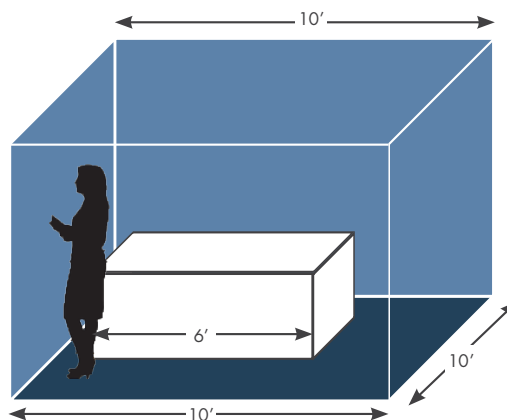
<p><b>10' X 20' Space</b>     <b>PLATINUM SPONSOR ONLY</b></p> <p>Five (12) Exhibitor Badges</p> <p>Two (2) draped 6' x 30' tables, trash can</p> <p>Five (5) chairs</p>	<p><b>10' X 10' Space</b>     <b>\$5,945</b></p> <p>Three (3) Exhibitor Badges</p> <p>Draped 6' x 30' table, trash can</p> <p>Three (3) chairs</p>	<p><b>6' Table top</b>     <b>\$2,945</b></p> <p>Two (2) Exhibitor Badges</p> <p>Draped 6' x 30" table, trash can</p> <p>Two (2) chairs</p>
--	--	---



### All 10' X 10' Booths & Tables Receive:

- Online Base Listing in Exhibitor Showcase
- Registration list of in-person and online conference attendees (*subject to regulatory requirements for discloseability*)

### 10' x 10' Booth Diagram



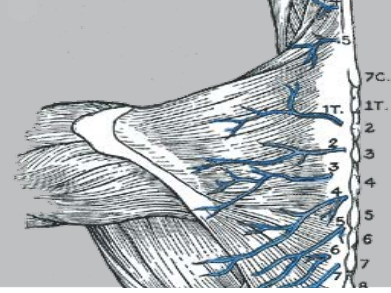
### Reserve a Booth

Reserve your space by completing the [Exhibitor Application Form](#) at the end of this prospectus.



# Neuromodulation THE SCIENCE

Feb. 28 - Mar. 2  
Lihue, HI



## Online Exhibits

Enjoy months of exposure to new and returning clinicians.

Beginning in December, exhibits will be published online on a rolling basis, and remain accessible online for 30 days post-conference. Maximize your visibility by applying ASAP.

Attendee traffic is directly related to

- 1) the length of time an exhibit is published, and
- 2) the position of the exhibit in the directory.

## Online

Digital Booth..... \$4,495

Create an engaging space with embedded banners, videos, and branding.

Digital Booths include all of the features of the Tabletop and appear ahead of them in the exhibit order. Add a 1200x300 banner of your own design, booth graphics, and include multiple handouts and company resources.



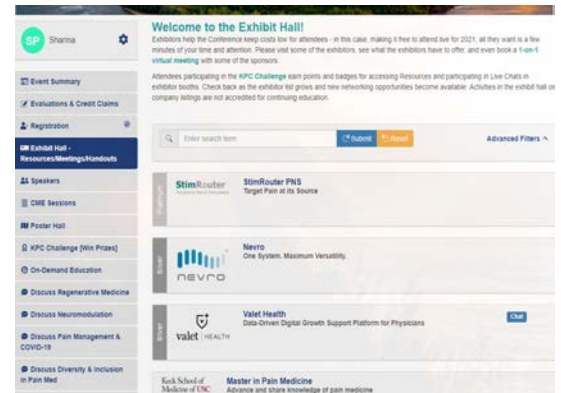
Digital Table..... \$2,495

Digital Tabletops appear ahead of base listings. They also include contact information for multiple company representatives, multiple web links, and a single downloadable handout.

Base Listing..... \$745

Base Listings appear after Digital Tabletops and include a company logo, expandable company description, a link to your website and contact information for a company representative.

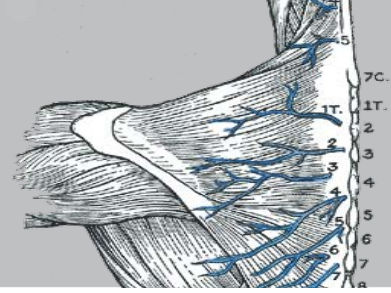
Base Listings are included for in-person Booths and Table Tops.



Pictured: Exhibitor Showcase

# Neuromodulation THE SCIENCE

Feb. 28 - Mar. 2  
Lihue, HI



## Hotel Room Key Cards

Hotel Room Key Cards .....\$5,995

Limit 1 | Art due: January 24

Put your brand into the hand of every attendee at the host hotel and be the first and last thing attendees think about each day. Cost is all inclusive - you provide the art - we'll handle the rest.



## Online Sponsored Video

Sponsor Video .....\$2,995

Video due: January 24

Make a splash with online viewers with a video of your design. Videos cannot exceed five (5) minutes in length. Played during breaks for online audience.

Learn more about Exhibit and Sponsorship opportunities at the **2022 Kaua'i Pain Conference**, March 4-5, 2022.

Discounts are available for dual participation!



## Sponsor Food & Beverage

**Note:** All food and beverage must be paid directly from the Conference to the caterers.

Closing Reception.....\$17,450

Limit 1 | Wednesday Evening, March 2

Hors d'oeuvres, wine and your company's message are on the menu at this unique opportunity. Hosted poolside, attendees, exhibitors, and faculty flock to this reception to network, discuss the conference, and eat. Local beverages and conversations flow at this important event.

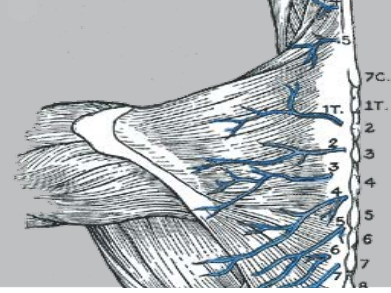
Stand out from the crowd with signs and a full-color banner highlighting your organization's sponsorship of the reception. This sign can include your logo and messaging.





# Neuromodulation THE SCIENCE

Feb. 28 - Mar. 2  
Lihue, HI



## Sponsor Food & Beverage

Lunch Sponsorship..... \$4,995

Limit 1 per day | 3 Available

Includes (1) 10 minute Sponsor Video to play for online audience

Sponsorship includes large, full-color graphics with your logo, displayed throughout lunch, your logo printed on associated materials, and acknowledgment in program materials.

Breakfast Sponsorship..... \$4,995

Limit 1 per day | 3 Available

Includes (1) 10 minute Sponsor Video to play for online audience

85% of attendees eat the conference breakfast. Sponsorship includes large, full-color banners with your logo, displayed throughout breakfast and acknowledgment in the program materials. Make sure attendees start the day with your company in mind.

Beverage Break..... \$2,795

Limit 1 per day | 3 Available

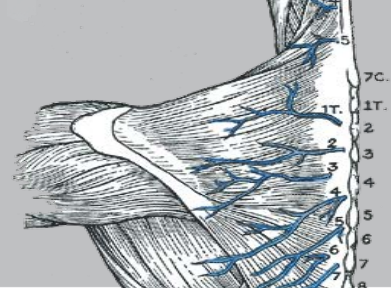
Conferences run on coffee; be seen by attendees by giving them what they crave. Sponsorship includes acknowledgment in the program materials and on break signs. Signs may include company logos and messaging.





# Neuromodulation THE SCIENCE

Feb. 28 - Mar. 2  
Lihue, HI



## Workshop Sponsorship

---

Thursday, March 3

Workshop Sponsorship..... \$2,495  
Subject to approval + Equipment

The conference is followed by intensive hands-on workshops and courses spanning invasive and non-invasive neuromodulation, computational modeling, and best clinical practice.

Workshops will focus on:

- **transcranial Direct Current Stimulation (tDCS): Advanced Theory and Hands-on Workshop**
- **Deep Brain Stimulation (DBS) and Spinal Cord Stimulation (SCS): Engineering Principles for Clinicians**



### Sponsorship

Sponsors will:

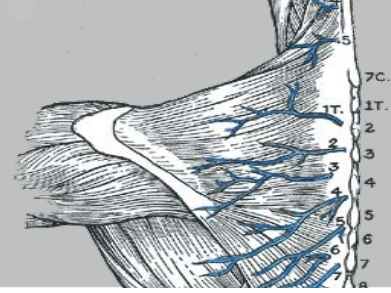
1. Have their equipment featured in workshop instruction.
2. Be listed as a sponsor in the program guide and workshop materials.
3. Receive two (2) passes to attend the workshop.

### Requirements

1. Workshop sponsorships must also exhibit at the NTS 2022 Conference.
2. Equipment must be loaned to the Conference by the Sponsor for the duration of the workshop.
3. Sponsors will not have editorial influence or control over content, and may not discuss workshop educational elements with faculty or planners.
4. To ensure the relevancy of a device to the workshop content, acceptance of a Workshop Sponsorship requires approval from faculty.

# Neuromodulation THE SCIENCE

Feb. 28 - Mar. 2  
Lihue, HI



## Exhibit Schedule & Logistics

Dates	Exhibitor Registration	Exhibit Installation	Exhibit Hours	Exhibit Dismantle
Sunday February 27	2:00 pm - 7:00 pm	2:00 pm - 7:00 pm		
Monday February 28	6:00 am - 7:00 am		7:00 am - 5:00 pm	
Tuesday March 1			7:00 am - 5:00 pm	
Wednesday March 2			7:00 am - 5:00 pm	5:00 pm - 7:00 pm

### Setup & Tear-down

**Exhibitors are responsible for return shipping and it is important to bring your own shipping supplies.**

The hotel does not supply waybills, and shipping forms can be difficult to find on the island.

Exhibits are required to remain in place throughout the conference. Exhibits may not be dismantled or packed prior to the official closing of the exhibition, and exhibit dismantling must be completed during the hours specified.

Contact [Education@Neurovations.com](mailto:Education@Neurovations.com) in the event that special arrangements are required.



### Space Assignments

Exhibit locations are prioritized by the level of support, date that payment is received, special needs and compatibility of exhibitors' products/services, and your company's history of exhibiting at *Neuromodulation: the Science Conference*.

Request your space by completing the Exhibitor Application Form at the end of this document.

### Shipping

Exhibitors are responsible for shipping their materials to and from the conference.

It is important to bring your own shipping supplies to Kaua'i. The hotel does not supply waybills, and shipping forms can be difficult to find on the island.

#### Labels

Boxes/packages may be sent for arrival 48 hours prior to Group arrival (no earlier than February 24) and must be marked with the following:

**Attention:** Event Department

**Conference:** Neuromodulation: the Science Conference

**On Site Contact:** [Your Name]

**Exhibiting Company:** [Name of Your Company]

**Arriving:** [Date of Arrival]

**Box:** \_ of \_

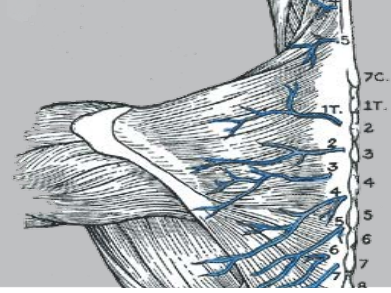
Royal Sonesta Kaua'i Resort

3610 Rice Street, Lihue, HI 96766

(808) 246-5017

# Neuromodulation THE SCIENCE

Feb. 28 - Mar. 2  
Lihue, HI



## Rules and Requirements

Any actions that are not in accordance with this agreement may result in the removal of the exhibiting company and its representatives from the activity site, in which case no refund will be allowed. Further, additional measures such as banning the representative and/or vendor from future involvement in Neuroventions Education activities may occur.

Educational activities, including facility arrangements, participant selection, program content, and format are the exclusive responsibility of Neuroventions Education, which reserves the right to add, delete, or change any terms, conditions, regulations, and decisions pertaining thereto. Neuroventions Education reserves the right to exercise its sole discretion to accept or refuse a prospective exhibitor's application or registration.

Exhibitors are responsible for obtaining appropriate licenses for any copyrighted materials, audio, and/or video utilized as part of an exhibit.

### RESPECT FOR THE HOST LOCATION

Exhibitors may not install any permanent fixtures or deface property in any way. Upon completion of the activity, exhibitors are expected to leave the exhibit space in the same condition that it was received.

Items and services, such as extra trash cans or wired internet, maybe contracted directly with the property and property's contractors (as applicable and available) at exhibitor's expense.

Balloons are not permitted as part of an exhibitor's display.

Photographing another exhibitor's booth is grounds for cancellation of an offending exhibitor's booth, at sole discretion of Neuroventions Education. Exhibitors will not be entitled to a refund in such a situation.

### EXHIBITOR MATERIALS

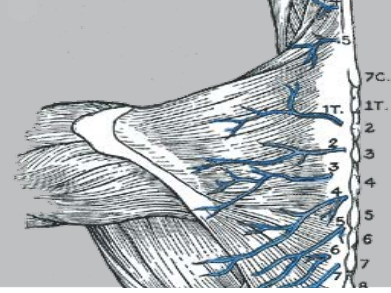
Promotional materials may be reviewed by Conference staff and are subject to removal if deemed offensive, dangerous or misleading. Any such removal will be made at the discretion of Conference staff and removal of such will not entitle an exhibitor to refunds or return of payment of any kind. A vendor may submit new materials for review and reinstatement, provided that there is suitable time to administer a replacement.

Each exhibitor is responsible for shipping their materials to and from the conference venue. Remember to bring boxes, tape, and return shipping labels.



# Neuromodulation THE SCIENCE

Feb. 28 - Mar. 2  
Lihue, HI



## Rules and Requirements

---

### EXHIBITOR STAFF

All members of an exhibitor's company attending the Conference must be pre-registered for the event. COVID-19 regulations prohibit attendees from registering on site.

All company employees, representatives and guests are required to wear conference-issued exhibitor badges at all times, in an unobstructed manner, while in the function space. Badges may not be altered in any manner. Company badges are not acceptable in lieu of official conference badges.

Exhibits must be staffed each day during exhibit hours. Representatives are expected to dress and conduct themselves in a professional manner consistent with a medical education meeting.

Representatives and employees of Neuroventions Education shall have free access to any exhibit at all times in the performance of their assigned duties.

Exhibits are required to remain in place during the conference. Contact [Education@Neuroventions.com](mailto:Education@Neuroventions.com) in the event that special arrangements are required. No exhibit may be dismantled or packed prior to the official closing of the exhibition, and exhibit dismantling must be completed during the hours specified.

### BOOTH DIMENSIONS

Exhibit displays may not exceed associated table-top or booth dimensions:

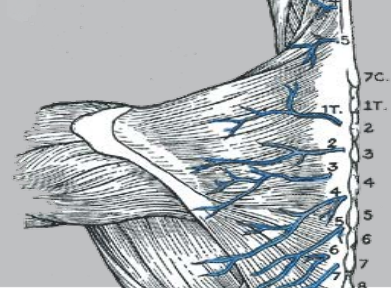
- 10' x 10' or 10' x 20' for booths
- 6 linear feet for table-tops

For example, a table-top exhibit with 10' backdrop is not permitted and would need to be dismantled. If an exhibitor refuses to modify or dismantle a display to comply with this policy, the exhibitor's participation in the event will be canceled, and the display will be removed for them without refund.

Company displays and materials are limited to the space and place of their exhibit. Materials may not be distributed outside of a company's exhibit space and booth/table display.

# Neuromodulation THE SCIENCE

Feb. 28 - Mar. 2  
Lihue, HI



## Rules and Requirements

### AUDIOVISUAL USAGE IN EXHIBITS

Audiovisual equipment as part of a display is acceptable; however, sound equipment must be regulated so that it doesn't disturb neighboring exhibitors (providing headsets for attendees is acceptable). In addition, spectators may not obstruct aisles or interfere with access to other exhibits.

Conference staff reserve the right to determine when sound levels from equipment constitutes interference with others or is unacceptable. In such an event, sound must be reduced or equipment will be removed at the exhibitor's expense.

Exhibitors are responsible for obtaining appropriate licenses for any copyrighted materials, audio, and/or video utilized as part of an exhibit.

### ANCILLARY EVENTS

No activities shall be scheduled by the Company, its employees, agents, or representatives to take place on the premises and during the time of the Conference without the express written permission of Neurovations Education.

Ancillary events may not conflict with any educational sessions, exhibit hours, corporate showcases, or corporate symposium scheduled during the Conference.

Scheduling, including transportation, must begin no sooner than 30 minutes before or after any activity during the Conference. Scheduling, including transportation, must begin no sooner than 30 minutes before or after any activity during the Conference. All events require prior approval from Neurovations Education in writing.

### GIVEAWAYS

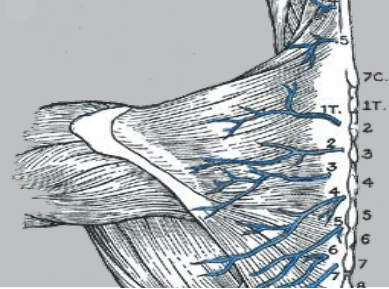
Giveaways of items with company logos, brand logos, or slogans readily visible are NOT permitted.

Companies regulated by the Pharmaceutical Research and Manufacturers of America's (PhRMA) codes governing interactions with healthcare professionals and the Advanced Medical Technology Association (AdvaMed), will be limited to giveaways allowed under such rules and codes of conduct. These items are those designed primarily for the education of patients or healthcare professionals. Due to these codes, companies regulated by PhRMA or AdvaMed are not allowed the following giveaways: pens, pencils, notepads, small desk clocks, pocket calculators, desk calendars and mouse-pads.

Prescription drug samples may be distributed to physicians only in accordance with the Prescription Drug Marketing Act. Distribution of approved items must not create a nuisance or cause interference with adjoining exhibits.

# Neuromodulation THE SCIENCE

Feb. 28 - Mar. 2  
Lihue, HI



## Rules and Requirements

### DISPLAY OF DRUGS AND DEVICES NOT APPROVED BY THE FEDERAL FOOD AND DRUG ADMINISTRATION (FDA)

Any investigational product that is graphically depicted within an exhibit or marketing material is subject to the following rules:

- Contain only objective statements about the product,
- Contain no claims of safety, effectiveness, or reliability,
- Contain no claims about how the product compares with marketed products,
- Must be accompanied by directions for becoming an investigator and a list of investigator responsibilities, and
- Prominently display the statement “Caution— Investigational Device—Limited to Investigational Use” on the product in a type size that is easy to read.

Exhibitors agree not to sell, promote, or distribute in any fashion any non-approved product, in whole or in part, during or in connection with the meeting to U.S. attendees. Exhibitors may, however, conduct sales activities for, and market and promote, non-approved products, solely to attendees who are non-U.S. doctors, exclusively for sales outside the United States, provided that such activities are in compliance with the relevant laws of any such non-U.S. jurisdiction. In accordance with U.S. Law, exhibitors may not sell and deliver Non-FDA approved products to U.S. physicians at the meeting. Exhibitors may sell and deliver Non-FDA approved products to non-U.S. physicians as long as they adhere to all applicable U.S. laws and regulations.

You can find further information and guidance on the subject at [www.fda.gov](http://www.fda.gov).

Penalties for non-compliance to the FDA rules and regulations include:

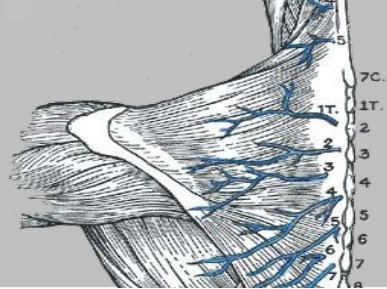
- Neurovations, at its sole discretion, will immediately shut down the exhibitor’s booth for the remainder of the meeting.
- The exhibitor will not be entitled to a refund.
- The exhibitor may face legal action from the U.S. government for failing to comply with the appropriate rules and regulations.
- The exhibitor may not be invited to participate in future meetings.

Easily visible labels stating “This device is not cleared by the FDA for distribution in the United States” or “This device is limited by federal law to investigational use only” must be placed near the device or drug and on any graphic depicting the device or drug.



# Neuromodulation THE SCIENCE

Feb. 28 - Mar. 2  
Lihue, HI



## Rules and Requirements

### EVENT PHOTOGRAPHY AND/OR VIDEO

Photographs and/or video will be taken by Neuroventions Education/Neuromodulation: the Science Conference. By taking part in this event you grant the event organizers full rights to use the images resulting from the photography/video filming, and any reproductions or adaptations of the images for fundraising, publicity or other purposes to help achieves the group's aims. This may include (but is not limited to) the right to use them in printed and online publicity and social media applications.

### INDEMNIFICATION

Neuroventions Education, Neuromodec, Neuromodulation: the Science Conference, and any of its officers or staff members will not be responsible for the safety of the property of the Company from theft, damage by fire, accident, or other causes. Neither Neuroventions Education, Neuromodulation: the Science Conference, and any of its officers, staff, agents, or representatives, shall be held accountable or liable for, and the same are hereby released from accountability or liability for, and damage, loss, harm, or injury to the person or any property of the Company from theft, fire, or other causes.

Company shall indemnify and save harmless Neuroventions Education from any and all losses, costs, damages, liability and expenses (including reasonable attorney fees) that may arise as a result of the acts or omissions of officers, directors, employees, or agents exhibiting at the CME conference.

### CONFERENCE DIVERSITY AND ACCESSIBILITY

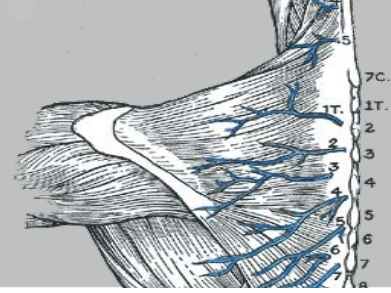
Neuroventions Education/Neuromodulation: the Science is committed to representing the diversity in the field of neurotechnology and supporting activities that enhance diversity now and in the future. This commitment includes the recognition of all people, regardless of race, nationality, creed, disability, or gender identity. As such, harassment or discrimination of any kind will not be tolerated during any conference activities. Concerns and violations should be reported immediately to the Accessibly and Diversity Committee.

The conference is committed to accessibility for all meeting events. Should any individual need assistance or have questions about accessibility, please let the organizers know in advance.

Advertisers are reminded to construct their exhibit spaces in full compliance whit the Americans with Disabilities Act (ADA).

# Neuromodulation THE SCIENCE

Feb. 28 - Mar. 2  
Lihue, HI



## Sponsorship and Exhibitor Application

COMPANY \_\_\_\_\_

MAILING ADDRESS \_\_\_\_\_

CITY \_\_\_\_\_

STATE \_\_\_\_\_

ZIP \_\_\_\_\_

AUTHORIZED REP \_\_\_\_\_

TITLE \_\_\_\_\_

EMAIL \_\_\_\_\_

PHONE \_\_\_\_\_

By completing the Sponsor & Exhibitor Application, you acknowledge the intention to advertise at the accredited activity, that you have read and understand all terms of this agreement, and that as an Authorized Representative of the applicant Company, you agree to comply with this agreement.

MENU			
Platinum Sponsor	\$37,495	Beverage Break	\$2,795
Gold Sponsor	\$24,995	Breakfast Sponsor	\$4,995
Silver Sponsor	\$12,495	Lunch Sponsor	\$4,995
10' x 10' Booth	\$5,945	Closing Reception	\$17,450
In-person Table Top	\$2,945		
		Hotel Room Key	\$5,995
Digital Booth	\$4,495	Sponsor Video	\$2,995
Digital Table	\$2,495		
Digital Base Listing	\$745	Thursday Workshop	\$2,495

WE WOULD LIKE TO SECURE THE FOLLOWING SPONSORSHIP/EXHIBITOR OPPORTUNITIES	PRICE
<b>TOTAL</b>	

Applications are not considered final until receipt of payment and approval by Neuroinnovations Education. Moreover, we reserve the right to deny exhibitor privileges to any applicant.

### Payment Information

(Select one)

- Please send an invoice to our Authorized Rep (email above)  
or  
 Pay by credit card

Learn more about Exhibit and Sponsorship opportunities at the **2022 Kaua'i Pain Conference**, March 4-5, 2022.

Discounts are available for dual participation!

CARDHOLDER NAME \_\_\_\_\_

CREDIT CARD NUMBER \_\_\_\_\_

CCV \_\_\_\_\_

BILLING ZIP CODE \_\_\_\_\_

EXPIRATION \_\_\_\_\_ / \_\_\_\_\_

### Conference Contact

Neuroinnovations Education

707.260.0849

3416 Valle Verde Dr.

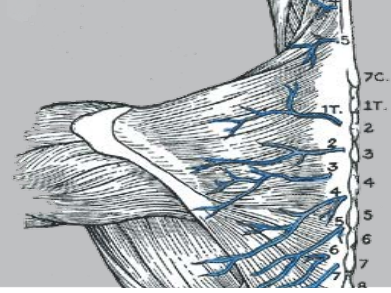
[Education@Neuroinnovations.com](mailto:Education@Neuroinnovations.com)

[NTSConference.com](http://NTSConference.com)

Napa, CA 94558

# Neuromodulation THE SCIENCE

Feb. 28 - Mar. 2  
Lihue, HI



## Exhibitor Badges

Please include the name and contact information for the number of exhibitor badges included in the exhibit/ sponsorship package that you have selected. Additional copies of this form may be used for packages above 4 badges. Any substitutions must be made prior to February 1, 2022.

TABLE TOP EXHIBITS INCLUDE TWO (2) INDUSTRY BADGES

### PRIMARY

NAME \_\_\_\_\_

TITLE \_\_\_\_\_

EMAIL \_\_\_\_\_

CELL # \_\_\_\_\_  
FOR ON-SITE CONTACT

### #2

NAME \_\_\_\_\_

TITLE \_\_\_\_\_

EMAIL \_\_\_\_\_

### #3

NAME \_\_\_\_\_

TITLE \_\_\_\_\_

EMAIL \_\_\_\_\_

### #4

NAME \_\_\_\_\_

TITLE \_\_\_\_\_

EMAIL \_\_\_\_\_

## Booth Information

Please include the following information with your application and email everything to:

[Education@Neurovations.com](mailto:Education@Neurovations.com)

- High resolution logo (300 dpi+)
- 50-word company description
- Company press kit, if available

### EXAMPLE

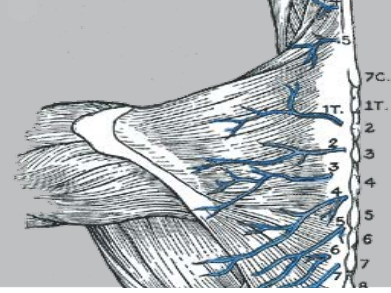
## NEUROVATIONS EDUCATION

Neurovations Education created unique learning experiences like the Kaua'i Pain Conference, Napa Pain Conference, and partners with organizations to manage or provide CME credits for national and regional events.



# Neuromodulation THE SCIENCE

Feb. 28 - Mar. 2  
Lihue, HI



## Location Requests

### Identify your 3 preferred booth locations

Spaces are assigned according to the level of support, the date an exhibit payment is received, special needs and compatibility of exhibitors' products/services, and history of exhibiting at Neuroventions events.

### TOP THREE (3) DESIRED SPACES

Selections are not guaranteed.

1 \_\_\_\_\_ 2 \_\_\_\_\_ 3 \_\_\_\_\_

### SPECIAL REQUESTS

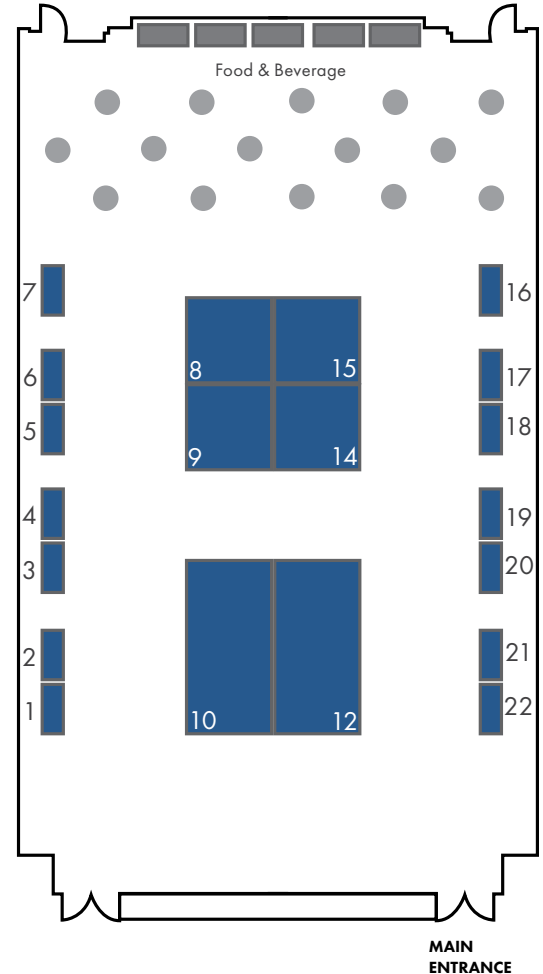
Such as, "If possible, place us near company X", or "We would like distance between us and company Y":

---

---

---

**Please Note:** This is an application to exhibit. All exhibitor applications are subject to review and approval by Neuroventions Education. Moreover, we reserve the right to deny exhibitor privileges to any applicant.



## Cancellations

Written cancellation notice must be received via fax, mail, or email by January 16, 2022 to receive a 50% refund on the full amount of the exhibitor/sponsorship opportunity requested. No refunds will be given after this date.

If the conference cannot take place due to acts of God, war, government regulations, disaster, strikes, civil disorder, or curtailment of transportation facilitating other emergencies making it inadvisable, illegal, or impossible to provide the facilities or to hold the meeting, each prepaid registrant/exhibitor will receive a copy all materials that would have been distributed. Fixed conference expenses will be paid from the pre-registration funds. Remaining funds will be refunded to pre-registrants/exhibitors. Neuroventions Education is not responsible for any other costs incurred by pre-registrants/exhibitors in connection with the conference.



# The Kaua'i Pain Conference

MARCH 4-5, 2022

## The Kaua'i Pain Conference (KPC) is the premier winter pain conference on the Hawaiian Islands.

The Kaua'i Pain Conference offers a unique forum for sharing advances and standards in pain management and treatment for colleagues in all disciplines of medicine, with exceptional content presented by national leaders in pain medicine, patient safety, community health, and the regulatory environment. The appropriate assessment and treatment of pain has a far-reaching impact on morbidity, mortality, quality of life, and economics — of individuals, communities, and across the healthcare system.

The Kaua'i Pain Conference attracts a mix of senior-to-mid career physicians, private practice owners, advanced practice providers, researchers, industry, students and pharmacists. Specialties in attendance are pain management, family medicine, internal medicine, primary care, emergency, oncology, and anesthesiology.

Exhibit and  
Sponsorship  
Opportunities are  
available!

Reach out to [Education@Neurovations.com](mailto:Education@Neurovations.com) to learn more.

Discounts are available for dual participation!



### Location

Royal Sonesta Kaua'i Resort Lihue  
3610 Rice St, Lihue, HI 96766